

PARVALUX

a maxon company



Door Automation

2021 catalogue



Door Automation

Parvalux provides an exciting range of motors for manufacturers of automatic door and gate opening systems. Our motors prove themselves daily in hundreds of premises, worldwide and offer the reliability, dependability and low running costs our customers have come to expect from a Parvalux British-designed and engineered unit. Whether your requirement is for automatic sliding doors, gate opening systems or electric garage doors, we can quickly customise our range to suit your specification or even develop a motor that's specific to your application.

Light duty

page 06 - 08

Standard duty

page 09 - 10

Heavy duty

page 11 - 12

Parvalux

About Us

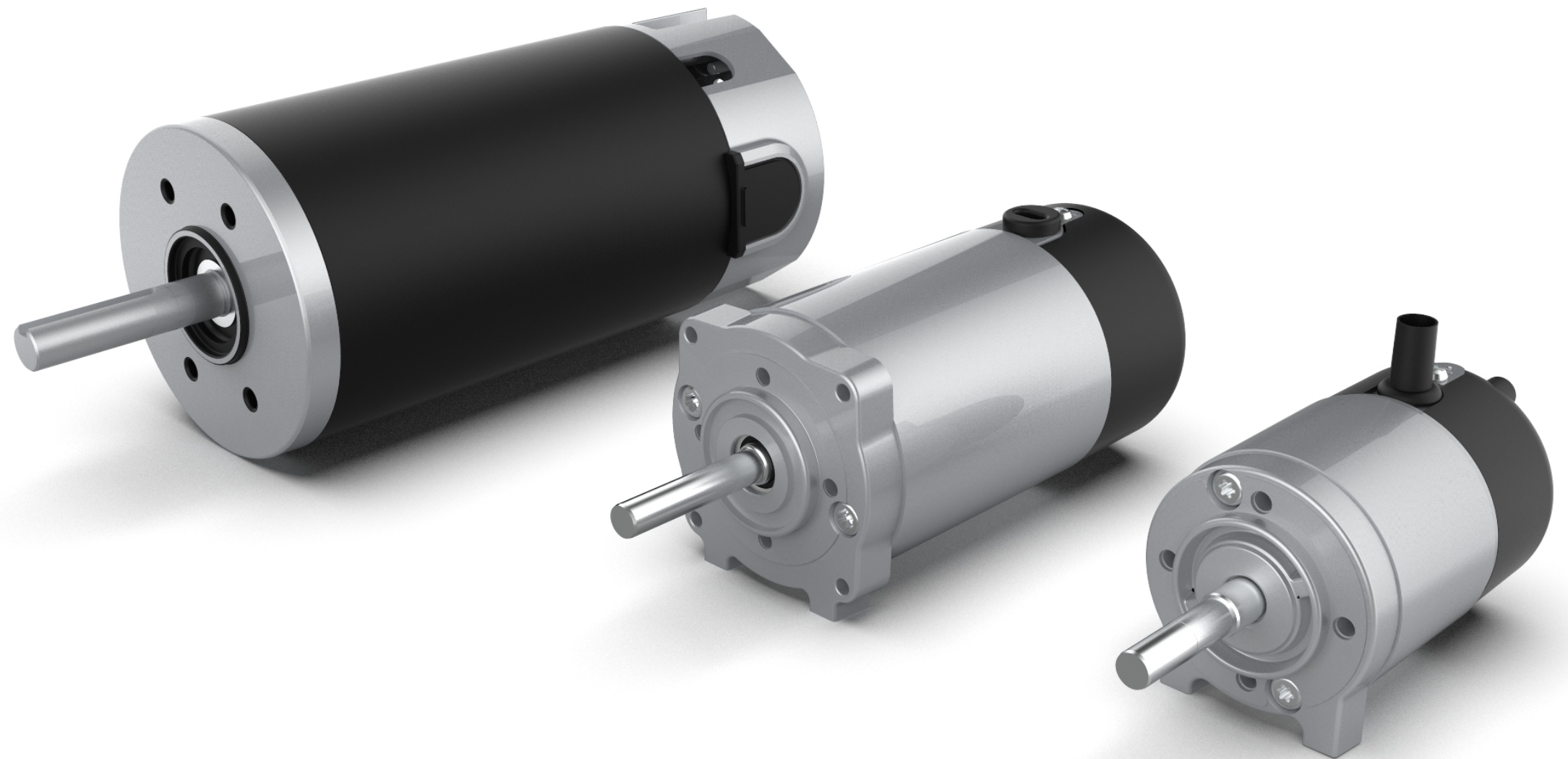
A true British manufacturing success story, Parvalux is the UK's largest fractional horsepower electric motor manufacturer and supplier with state-of-the-art manufacturing and service facilities.

We have over 70 years' experience creating the perfect combination of motor and gearbox to match our customers' applications and we offer thousands of standard AC, DC brushed and DC brushless electric motor options. We can easily customise any motor or gearbox to meet your exact requirements and we can do this at no or minimal extra cost. Our design team can help you choose, customise or design from scratch, geared motor solutions, ensuring you gain a competitive advantage in your market.

Our products are found in hundreds of applications, globally but we are particularly strong in industrial automation, e-mobility, transportation, logistics and a wide range of medical equipment. Parvalux is proudly a maxon company, meaning that we have representation on every continent and the backing of one of the finest technical teams on the planet.

As well as a huge range of standard products we also offer semi-custom and fully-custom design options to ensure you have a geared motor solution that exactly meets the needs of your application.

To find out more about the Parvalux product range, please visit www.parvalux.com.

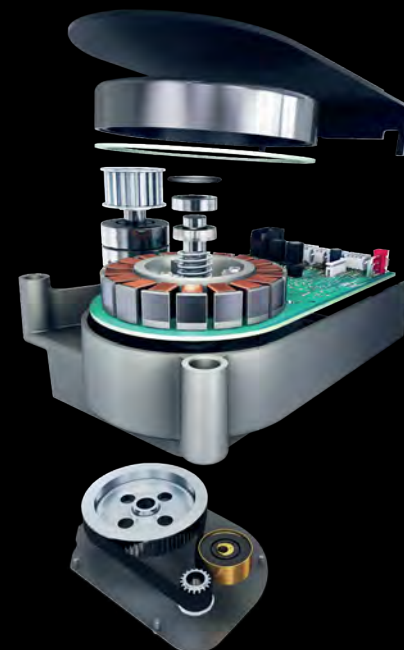


maxon

Precision Drive Systems

In 2018 Parvalux was acquired by Swiss motor manufacturer, maxon. Their brushless and brushed DC motors with ironless windings are among the best in the world; with flat motors with iron cores completing their modular product portfolio.

maxon's modular system includes planetary and spur gearheads, spindle drives, as well as encoders and control electronics.



A photograph showing the exterior of a modern building. The building features large glass windows and a prominent entrance area with a covered walkway. The architecture is contemporary, with clean lines and a mix of materials. The entrance is highlighted by a large glass door and a circular mat. The surrounding area includes a paved sidewalk and a street with a car visible in the background.

A side view of a high-speed train (TGV) with its door open, showing the interior of the door and the platform. The train is white with a red stripe and has a circular window next to the door. The platform is visible in the foreground.

A modern elevator with a stainless steel door and a yellow wall. The elevator is set into a bright yellow wall with vertical paneling. The door is open, revealing a dark interior. To the right of the door is a control panel with a digital display and several buttons. The floor is a light beige color.

A photograph of a modern house with a large, light-colored garage door and a wooden slat fence in the foreground. The house has a gabled roof with large windows. The fence is made of horizontal wooden slats and is supported by concrete pillars. The scene is set during the day with trees in the background.



Brushed right-angle geared motor

Technical drawing of the motor assembly showing front and side views with dimensions.

Front View Dimensions:

- Motor length: 48
- Motor diameter: $\varnothing 63$
- Motor label: Motor
- Flange diameter: 48
- Flange thickness: 150
- Flange mounting holes: 30 (center-to-center)
- Flange mounting holes: 3x M5 thru-holes $\varnothing 9.0 \pm 15.0$ both sides
- Flange mounting holes: 25.4 (center-to-center)
- Flange mounting holes: 18 (center-to-center)
- Flange mounting holes: 24.1 (center-to-center)
- Flange mounting holes: 29.7 (center-to-center)
- Flange mounting holes: 23.2 (center-to-center)

Side View Dimensions:

- Flange diameter: 42
- Flange thickness: 15
- Flange mounting holes: 15 (center-to-center)
- Flange mounting holes: 39 (center-to-center)
- Flange mounting holes: 18 (center-to-center)
- Flange mounting holes: 16.5 (center-to-center)

	+L mm	
Power on	38.0	
Power off	32.0	

	+L mm
Resolution	4 - 48 ppr 12.0
Resolution incremental	4 - 4096 ppr 9.0
Resolution absolute	4 - 4096 ppr 12.0

+L mm = added length



Brushless right-angle geared motor

Technical drawing of the motor assembly showing front and side views with dimensions.

Front View Dimensions:

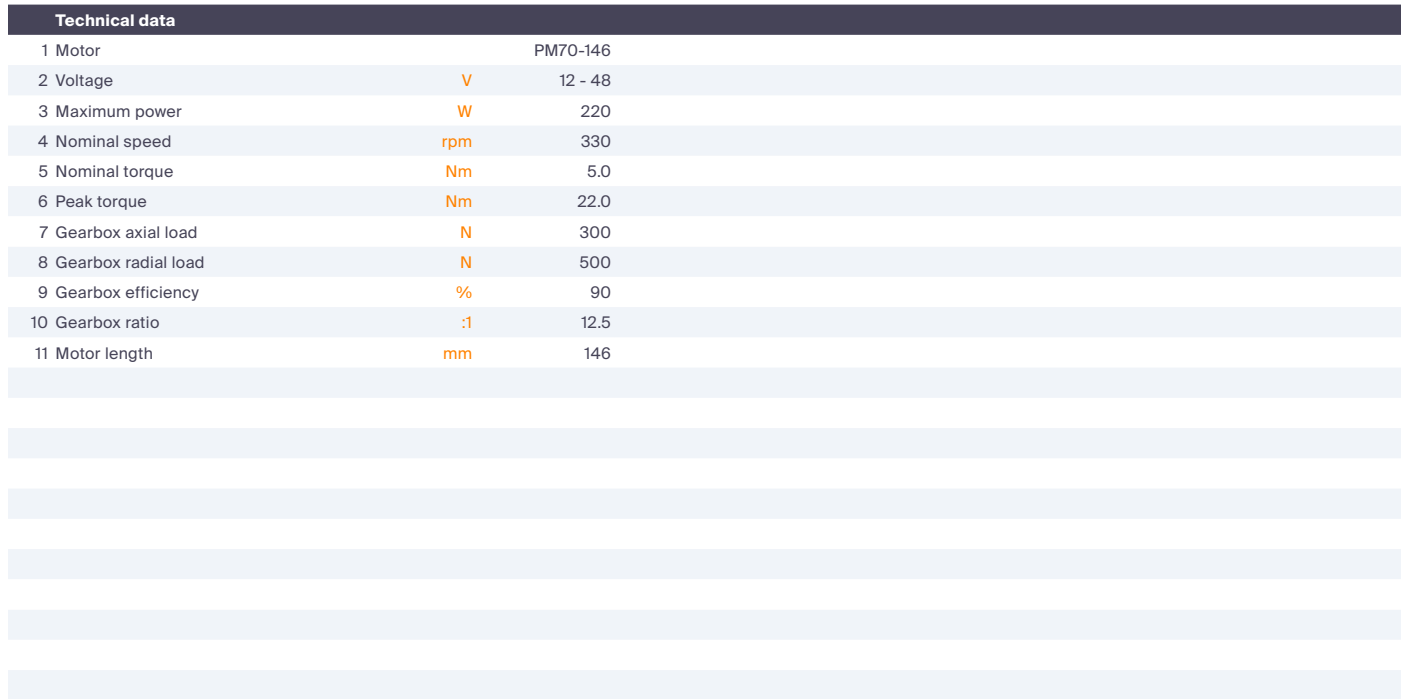
- Motor length: 48
- Motor width: 19
- Motor label: Motor
- Top flange width: 48
- Top flange hole spacing: 30
- Top flange hole diameter: 3x M5 thru-holes Ø9.0 ±15.0 both sides
- Top flange thickness: 14.9
- Top flange hole offset: 25.4
- Top flange hole diameter: 18
- Top flange hole offset: 24.1
- Top flange hole offset: 29.7
- Top flange hole offset: 23.2

Side View Dimensions:

- Top flange width: 42
- Top flange hole spacing: 15
- Top flange hole diameter: 39
- Top flange hole offset: 18
- Top flange hole offset: 16.5
- Top flange hole offset: 16.5
- Top flange hole offset: 16.5

[illegible]

Standard-duty door automation systems



Motor
Power on 38.0
Power off 32.0

+L mm

Gearbox
Shaft attachments;
pulleys, cogs, etc.

er
olution
olution incremental
olution absolute

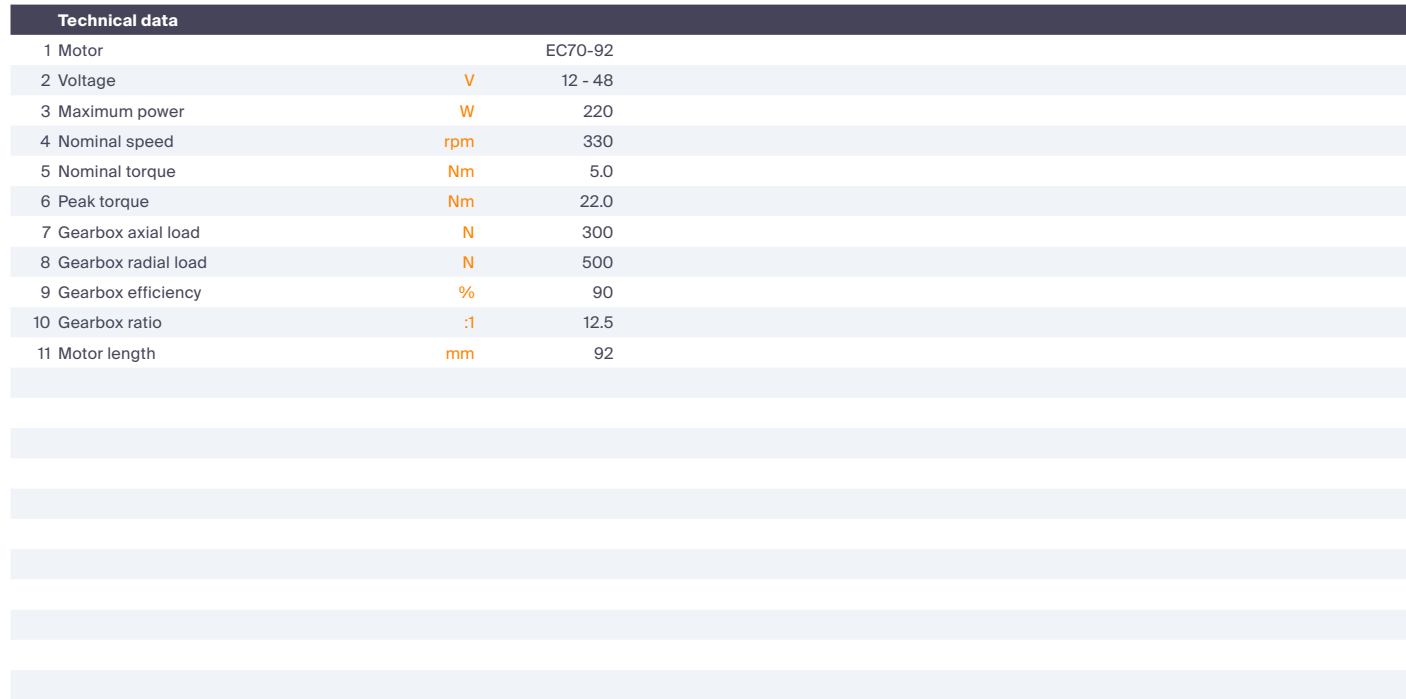
4 - 48 ppr
4 - 4096 ppr
4 - 4096 ppr

+L mm
12.0
9.0
12.0

+L mm = added length



Standard-duty door automation systems



Brake
Power on 38.0
Power off 32.0

+L mm

Gearbox
Shaft attachments;
pulleys, cogs, etc.

er
olution 4 - 48 ppr 12.0
olution incremental 4 - 4096 ppr 9.0
olution absolute 4 - 4096 ppr 12.0

+L mm

+L mm = added length



Brushed right-angle geared motor

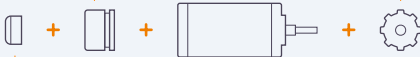
Technical drawing of the motor assembly showing three views: side, front, and top.

Side View: Shows the motor with a diameter of 60 and a length of 138.

Front View: Shows the motor flange with a central circular opening. Dimensions include 130 (total width), 52 (width of each side section), 56 (height of the upper section), 64 (height of the lower section), and 165 (total height). Four 8.6 thru-holes are indicated.

Top View: Shows the motor base with a central hole of diameter 25 h7. Dimensions include 90 (width), 175 (height), 50 (width of each side section), 50 (width of the central section), 73 (total width), and 63 (height of the central section).

Accessories

Brake	+L mm		Gearbox
Power on	38.0		Shaft attachments; pulleys, cogs, etc.
Power off	32.0		
Encoder			
Low resolution	4 - 48 ppr		
High resolution incremental	4 - 4096 ppr		
High resolution absolute	4 - 4096 ppr		

+L mm = added length



Brushless right-angle geared motor

Technical drawing of the 1000 Series Motor Mounting Plate, showing three views: front, side, and top.

Front View Dimensions:

- Overall width: 130
- Overall height: 165
- Distance between mounting holes: 52 (twice)
- Distance from top edge to mounting holes: 56
- Distance from bottom edge to mounting holes: 64
- Motor length: 98
- Motor length (dashed line): 138
- 4x 8.6 thru-holes

Side View Dimensions:

- Overall width: 90
- Overall height: 175
- Distance from top edge to mounting holes: 50 (twice)
- Distance from bottom edge to mounting holes: 50
- Motor length: 98
- Motor length (dashed line): 138
- 8 mm parallel keyway

Top View Dimensions:

- Overall width: 130
- Overall height: 165
- Distance between mounting holes: 52 (twice)
- Distance from top edge to mounting holes: 56
- Distance from bottom edge to mounting holes: 64
- Motor length: 98
- Motor length (dashed line): 138
- 4x 8.6 thru-holes

Accessories

Brake		+L mm		Gearbox
Power on		38.0		Shaft attachments; pulleys, cogs, etc.
Power off		32.0		

The diagram illustrates the assembly of a motor with various accessories. A central motor icon is flanked by plus signs and icons for a brake, a gearbox, and an encoder. Lines connect these icons to their respective specification tables.

Encoder		+L mm		
Low resolution	4 - 48 ppr	12.0		
High resolution incremental	4 - 4096 ppr	9.0		
High resolution absolute	4 - 4096 ppr	12.0		+L mm = added length



Contact

Our Global Network

Parvalux products are used in a range of different industries all over the world, so it's important that we can support you wherever you may be.

Our global network ensures that we can answer your questions quickly and clearly, and, of course, get your order to you as soon as possible.



America



maxon precision motors inc.
125 Dever Drive, Taunton, MA 02870, USA
info.us@maxongroup.com | +1/508 - 677 0520

Europe



Parvalux HQ
490 Wallisdown Road, Bournemouth, Dorset BH11 8PU, UK
sales@parvalux.com | +44 (0) 1202 512 575



maxon motor ag
Brunigstrasse 220, 6072 Sachseln, Switzerland
info@maxongroup.com | +41 (0) 41 662 95 95



maxon motor gmbh
Truderinger Strasse 210, 81825 Munchen, Germany
shop.de@maxongroup.com | +49/89 - 420493 - 0



mdp SAS
21 porte du Grand Lyon, 01700 Neyron, France
contact@mdp.fr | +33 (0) 4 72 01 83 00



maxon Kwapil (Poland, Czech and Slovak Republic)
Hlavní 1054/131, 624 00 Brunn, Czech Republic
sales@kwapil.com | +420 541 211 538



maxon motor benelux bv
Josink Kolkweg 38, 7545 PR Enchede, Netherlands
sales.nl@maxongroup.com | +31/53 - 744 0 744



maxon Kwapil
Kammelweg 9, 1210 Wien, Austria
verkauf@kwapil.com | +43 (1) 278 85 85



maxon motor iberica
C/ Polo Norte No. 9, 28850 Torrejon de Ardoz, Spain
info.es@maxongroup.com | +34 916 564 973



maxon motor italia S.r.l.
Società Unipersonale, Via Sirtori 35, 20017 Rho MI, Italy
info.it@maxongroup.com | +39 02 93580588



maxon motor Israel
Leshem Industrial Park 6, Caesarea 3079870, Israel
sales.il@maxongroup.com | +972 74 749 0888

Asia



maxon motor Korea
27, Banpo-daero 14-gil, Seocho-Gu, Seoul, Korea 06652
info.kr@maxongroup.com | +82 2 3486 3441



maxon motor (Suzhou)
Jiangxing East Road, No. 1128, Suzhou City, China
shop.cn@maxongroup.com | +86/512 - 8207 9287



maxon India Pvt. Ltd.
Niran Arcade, No. 563/564, Bangalore, India
info.in@maxongroup.com | +91 80417 34132



maxon Japan
5-1-15 Shinjuku-Ku, Tokyo 160-0022, Japan
sales.jp@maxongroup.com | +81 (3) 3350 4261



maxon motor Taiwan
Chongxin Rd. Sanchogng District, New Tapei City, Taiwan
info.tw@maxongroup.com | +886 (2) 2999 3558



maxon motor SEA
22 UBI Avenue 3 #05-58, 408868 Singapore
sales.sg@maxongroup.com | +65 6950 4628

Pacific



maxon motor Australia Pty Ltd
Unit 1, 12 - 14 Beaumont Road, Mount Kuring-Gai, NSW 2080, Australia
sales.au@maxongroup.com | +61 2 9457 7477

